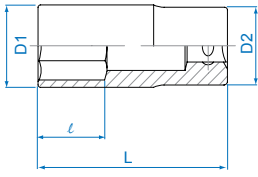


Deep Socket



4235M 4235S 1/2"

- Metric-DIN 3124, ISO 2725-1
- ANSI / ASME B107.1



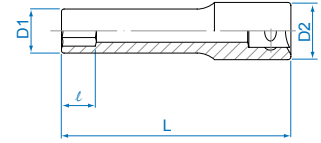
KT NO.	mm	D1 mm	D2 mm	l mm	L mm	g	kg
423508M	8	13.2	22.0	16	77	113	6 / 120
423509M	9	14.0	22.0	16	77	114	6 / 120
423510M	10	15.2	23.7	24	77	116	6 / 120
423511M	11	16.3	23.7	24	77	118	6 / 120
423512M	12	17.7	23.7	24	77	125	6 / 120
423513M	13	18.7	23.7	24	77	124	6 / 120
423514M	14	20.2	23.7	35	77	127	6 / 120
423515M	15	21.3	23.7	35	77	140	6 / 120
423516M	16	22.6	23.7	35	77	139	6 / 96
423517M	17	23.7	23.2	35	77	132	6 / 96
423518M	18	25.5	23.2	35	77	136	6 / 96
423519M	19	25.7	23.2	35	77	151	6 / 96
423520M	20	27.7	24.0	35	77	194	6 / 96
423521M	21	27.7	25.0	35	77	163	6 / 96
423522M	22	29.8	26.0	35	77	166	6 / 96
423523M	23	31.2	27.5	35	77	208	5 / 60
423524M	24	31.8	28.5	35	77	212	5 / 60
423525M	25	33.4	29.5	35	77	224	5 / 60
423526M	26	34.8	30.5	35	77	244	5 / 60
423527M	27	36.6	31.5	34	77	270	5 / 60
423528M	28	37.8	32.5	34	77	312	5 / 50
423529M	29	38.8	33.5	34	77	309	5 / 50
423530M	30	39.8	34.5	34	77	307	5 / 50
423532M	32	41.8	36.0	34	77	334	5 / 50
423533M	33	43.8	38.5	35	77	346	5 / 50
423536M	36	46.8	40.5	36	77	410	2 / 40
423538M	38	49.0	40.5	38	77	490	2 / 40
423541M	41	53.0	40.5	40	77	665	2 / 24
KT NO.	inch	D1 mm	D2 mm	l mm	L mm	g	kg
423510S	5/16	13.2	22.0	16	77	116	6 / 120
423512S	3/8	14.7	22.0	16	77	116	6 / 120
423514S	7/16	16.3	23.7	24	77	118	6 / 120
423516S	1/2	18.7	23.7	24	77	130	6 / 120
423518S	9/16	20.2	23.7	35	77	138	6 / 120
423520S	5/8	22.6	23.7	35	77	139	6 / 96
423522S	11/16	23.7	23.2	35	77	115	6 / 96
423524S	3/4	25.7	23.2	35	77	140	6 / 96
423526S	13/16	27.7	25.0	35	77	163	6 / 96
423528S	7/8	29.8	26.0	35	77	166	6 / 96
423530S	15/16	31.8	28.5	35	77	195	5 / 60
423532S	1	33.8	29.5	35	77	277	5 / 60
423534S	1-1/16	36.6	31.5	34	77	239	5 / 60
423536S	1-1/8	37.8	32.5	34	77	309	5 / 50
423538S	1-3/16	39.8	34.5	34	77	307	5 / 50
423540S	1-1/4	41.8	36.0	34	77	334	5 / 50
423542S	1-5/16	44.0	38.5	35	77	377	5 / 50
423544S	1-3/8	46.0	38.5	35	77	401	2 / 40
423546S	1-7/16	47.5	40.5	36	77	424	2 / 40
423548S	1-1/2	49.0	40.5	38	77	496	2 / 40

4245M

EXTENDED LENGTH

1/2"

- DIN 3120



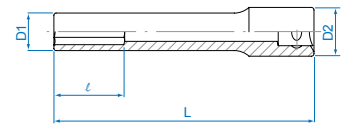
KT NO.	mm	D1 mm	D2 mm	l mm	L mm	g	kg
424508M	8	13.2	22.0	9.0	90	110	6 / 120
424509M	9	14.0	22.0	10.0	90	113	6 / 120
424510M	10	15.2	23.7	11.0	90	133	6 / 120
424512M	12	17.7	23.7	13.0	90	155	6 / 120
424513M	13	18.7	23.7	14.0	90	157	6 / 120
424514M	14	20.2	23.7	15.0	90	162	6 / 120

4255M

EXTENDED LENGTH

1/2"

- DIN 3120



KT NO.	mm	D1 mm	D2 mm	l mm	L mm	g	kg
425508M	8	13.2	22.0	9	120	135	6 / 96
425509M	9	14.0	22.0	10	120	145	6 / 96
425510M	10	15.2	23.7	11	120	162	6 / 96
425512M	12	17.7	23.7	13	120	200	6 / 96
425513M	13	18.7	23.7	14	120	202	6 / 96
425514M	14	20.2	23.7	15	120	217	6 / 96

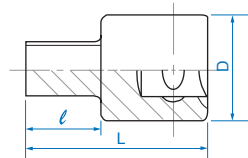
Square Socket



4014M

1/2"

- DIN 3120



KT NO.	mm	D mm	l mm	L mm	g	kg
401408M	RB8.0	23.5	13.5	35	60	10 / 200
401409M	RB9.5	23.5	13.5	35	68	10 / 200
401410M	RB10.0	23.5	13.5	35	72	10 / 200
401411M	RB10.5	23.5	13.5	35	78	10 / 200
401412M	RB12.0	23.5	13.5	35	90	10 / 200
401413M	RB12.7	23.5	13.5	35	97	10 / 200
401414M	RB13.5	23.5	13.5	35	106	10 / 200
401419M	RB19.0	25.0	15.5	40	130	10 / 160