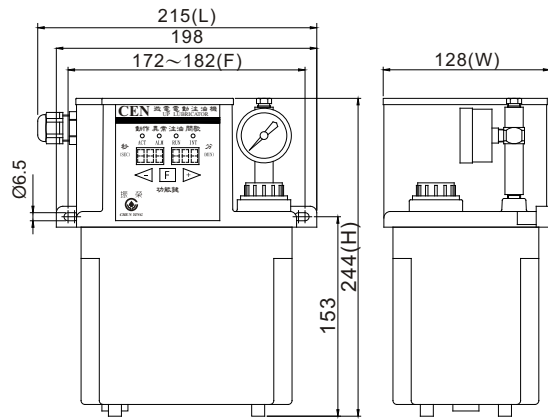


# CEN04 Type Pressure-Relief Electric Lubricator



CEN04-01 Type Standards Externals

### ◆ Features

1. CEN04 type has a timer, which controls the operation and interval time. It has operation, abnormal and interval indicators that is easy for visual checking.
2. Recommend to work with volume distributors. If works with CAB or CBB type volume distributor, it will feed oil during operation time. If works with CDB or T type volume distributor, it will feed oil during interval time.
3. The discharge volume is fixed. The lubrication points of volume distributor supply a fixed flow of oil.
4. It has a pressure switch device and been set up as 8kg/cm<sup>2</sup>, which assures the oil volume of lubrication point and check if the piping works normally. The standard specification is NC (Normal Close) contact, which means if the pressure is abnormal, it will have signal.
5. It has a float switch (NC Contact) that can detect the oil volume. When oil is lower than the minimum level, the float switch will send continuous signal automatically and the buzzer will alarm.
6. It has a pressure gauge where an operator can check the pressure easily.
7. Please don't press the force feed-oil ( **F** ) button more than three minutes in order to avoid overloading. When the temperature reaches 100°C, the sensor will be on to stop the motor continue running about 5 minutes.
8. Its function is similar to CEN03 type. The difference is CEN03 type is without timer and CEN04 type is controlled by a timer. CEN01 and CEN02 types are resistance type lubricators.

### ◆ Application of Machines Equipment

1. It can be used for the machines requiring strictly rationing oil flow.
2. It is usually used for such as processing machines or projecting machines.

Model	Act Time	Interval Time	Motor	Max Volume	Max Pressure	1Ø Voltage	Ampere	Hertz	Discharge Bore	Oil Viscosity
CEN04	1-999sec	1-999sec 1-999min	30W	130 cc/min	15kgf/cm <sup>2</sup>	110V 220V	2.5A 1A	60Hz or 50Hz	Ø4 or Ø6	32-68cSt@40°C

CEN04 Single Phase Wiring Diagram

Model	Tank Code	Tank Material	Capacity Liters	Fixed Hole Distance(mm)	Length (mm)	Width (mm)	Height (mm)	Weight (kg)
CEN04	01	Resin	2 L	177	215	128	244	4.00
	02	Aluminum	2 L	200	218	145	235	5.20
	03	Resin	3 L	205	230	167	244	4.60
	04	Resin	4 L	250	277	162	264	5.20
	05	Aluminum	4 L	280	298	167	255	6.15
	08	Iron	4 L	338	355	190	280	8.85

Abnormal Output			Ground	Power
NO (A)	NC (B)	COM	GND (P. E)	POWER
⊕	⊕	⊕	⊕	⊕ ⊕

### ◆ Order code :

<b>CEN 04</b>	<b>01</b>	<b>2</b>	<b>C</b>	<b>3</b>	<b>※</b>
Model	Tank Capacity(Material)	Time ( Act x Interval )	Voltage	Discharge Bore	Special Request
04 : Pressure-Relief Type, Controlled By Timer	01 : 2L ( Resin ) 02 : 2L ( Aluminum ) 03 : 2.5L ( Resin ) 04 : 4L ( Resin ) 05 : 4L ( Aluminum ) 08 : 8L ( Iron )	1 : sec x sec 2 : sec x min	A : 110V,60Hz B : 220V,50Hz C : 220V,60Hz	0 : Ø4 1 : Ø6 2 : Ø4 ( With Pressure Gauge ) 3 : Ø6 ( With Pressure Gauge )	